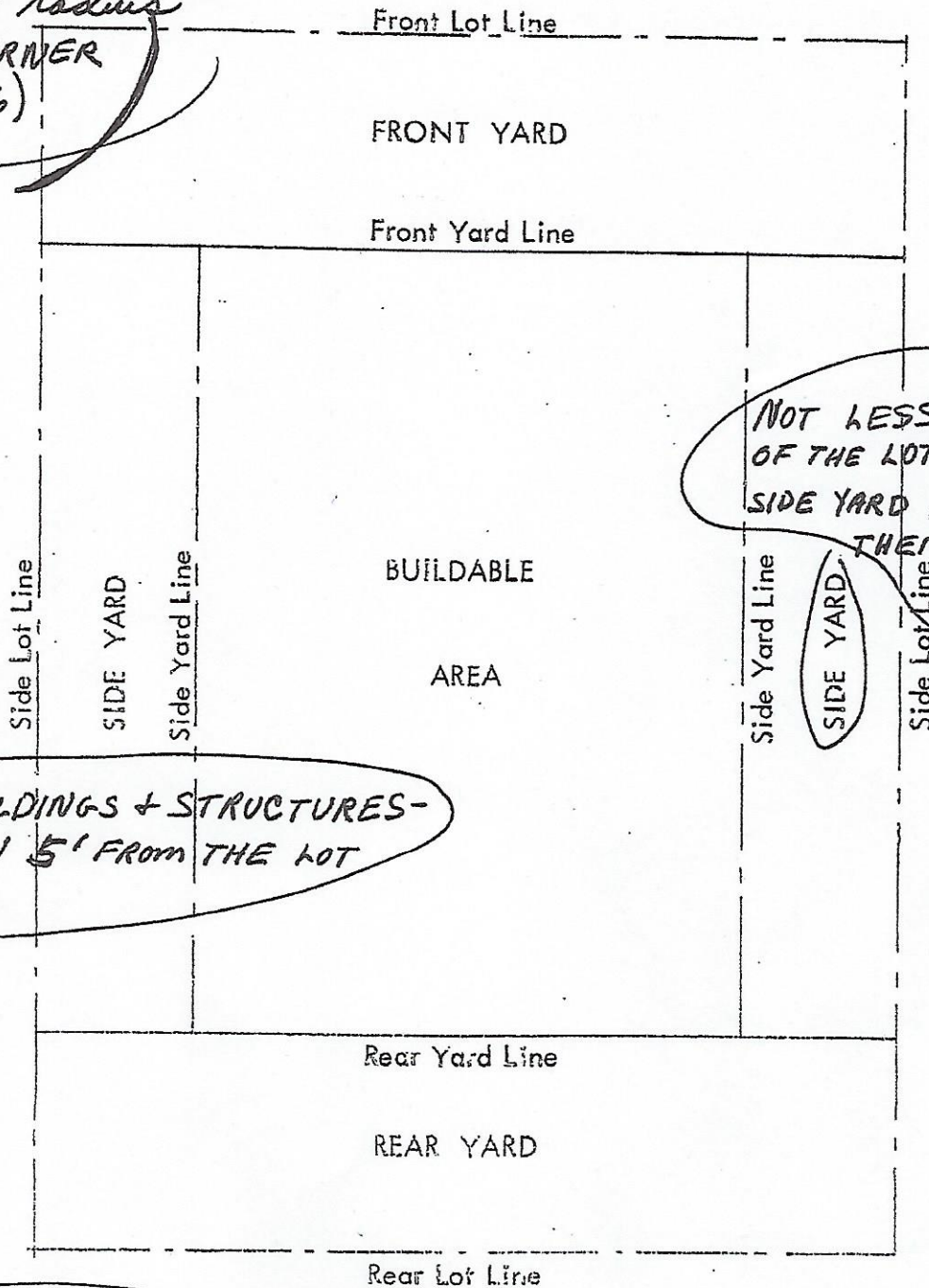


SETBACKS

25' radius
IF CORNER
LOT (P.6)



NOT LESS THAN 10%
OF THE LOT - EXCEPT WHEN
SIDE YARD ADJOINS A STREET
THEN NOT LESS THAN
30' (P.16)

SIDE YARD

ACCESSORY BUILDINGS + STRUCTURES -
NOT LESS THAN 5' FROM THE LOT
LINE (P.4)

ACCESSORY BUILDINGS
& STRUCTURES SHALL NOT
BE NEARER THAN 10' FROM
THE PRINCIPAL BUILDING
(P.4)